

AUGUST 2021



**REHIRE**  
Division

Serving the **Hire Industry** and the **Hire Industry** only

Power Generation //

Solar Hybrid  
Solutions //

Distribution  
& Cable //

Fluid Storage //

Lighting Towers //

Site Services //

**EQUIPMENT HIRE &  
SUPPORT SERVICES**

**CATALOGUE**





# REHIRE Division

For over a decade the MHM Rehire service has been available exclusively for hire organisations working throughout the UK and Ireland.

We organise our activities in the same style as any conventional nationally operating hire company. This means full nationwide delivery and collection, with a comprehensive back-up service carried out by fully trained engineers.

The MHM rehire desk is managed by experienced people who understand the unique requirements of a hire company, irrespective of size.

Our fleet is comprised of a range of modern power generation machinery, alongside an extensive line of energy-saving site lighting equipment. Also included are our advanced fluid tanks for the safe storage of hydrotreated vegetable oil (HVO), water, diesel fuel and diesel exhaust fluid (AdBlue).

However, our service doesn't end at simply delivering equipment. We can also supply qualified, hand-picked, tradespeople.

These include electricians to wire you up and plumbers to plumb you in.

So, if you have a client that is looking for a complete site set-up, you can pass over their requirements to our skilled team with confidence.

One final note, the MHM rehire service is available only for genuine hire firms. *We do not, under any circumstances, offer our equipment or services to an end user or your customer.*



Need to know more? Then get in touch with us:

TEL: +44 (0)808 168 9099

EMAIL: [rehire@mhmplant.com](mailto:rehire@mhmplant.com)

FAX: +44 (0)1639 777001

MHM Rehire Division **ONLY**  
hire to rental companies



Our Rehire Division **DO NOT**  
hire direct to your customers



Tel 0808 1689099, opt. 2 (24/7 - 365)  
Email [rehire@mhmplant.com](mailto:rehire@mhmplant.com) [www.mhmplant.com](http://www.mhmplant.com)

Serving all your power, fluid storage, lighting and site services requirements  
- contact now as we are happy to help.

# Contents //

Solar Hybrid Generators	4
Battery Packs & Solar Kits	5
Static Generators	6
Towable Generators	9
Vandal Proof Generators	10
Distribution & Cables	11
Fuel Storage	12
AdBlue Storage	13
Water Storage	14
Site Lighting	15
Site Services	16
Service Charges	17



**REHIRE**  
Division

Tel 0808 1689099, opt. 2 (24/7 – 365)

Email [rehire@mhmplant.com](mailto:rehire@mhmplant.com) [www.mhmplant.com](http://www.mhmplant.com)

# Solar Hybrid Generators //

**MHM SOLAR HYBRID-GEN**

All pictures are for illustration purposes only, actual machines supplied may differ in appearance and specification.

**REDUCE CO<sub>2</sub> EMISSIONS**

**REDUCE FUEL COSTS**

**REDUCE NOISE**

**USE & STORE RENEWABLE POWER**

**Self charging hybrid power you can trust**

**NEVER BE WITHOUT POWER**

**6kVA Solar Hybrid-Gen**  
(MGTP 6000 SHG)

**10kVA Solar Hybrid-Gen**  
(MGTP 10000 SHG)

**3.5kVA Solar Hybrid-Gen**  
(MGTP 3500 SHG)



**3.5, 6 & 10kVA options available**  
**20-100kVA coming soon...**

Model	Hire Rate				Transport
	Min 1 week		Min 26 weeks – 5 years		
	Standard	Premium	Standard	Premium	
<b>3.5 kVA</b>	£POA P/W	£POA P/W	£POA P/W	£POA P/W	£POA
<b>6 kVA</b>	£POA P/W	£POA P/W	£POA P/W	£POA P/W	£POA
<b>10 kVA</b>	£POA P/W	£POA P/W	£POA P/W	£POA P/W	£POA

**TOWABLE options available**



**Additional Solar Kit options available**  
Please see page 5.

**BREAKDOWN COVER**

**Standard Hire Rate** = Breakdown cover only within the hours of 8am–5pm (Mon–Fri), excluding Bank Holidays  
**Premium Hire Rate** = 24/7 breakdown cover

**KEY:** P/W = Per Week | **Hire period** = Min. 1 week hire  
**Transport** = UK National | **Diesel Fuel** = Supplied on Sale or Return at £POA per litre

**MHM** | **REHIRE** Division  
Tel 0800 1689099, opt. 2 (24/7 – 365)  
Email rehire@mhmpant.com www.mhmpant.com

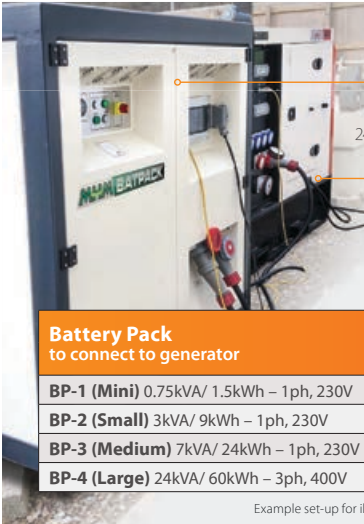
Should machines be booked within the given MHM booking deadline, machine availability and delivery is **100% GUARANTEED**



All our generators are HVO Approved (BS EN 15940:2016 Standard Only)




# Battery Packs //

**BP-4 (Large)**  
Ready to Rent  
24kVA/ 60kWh Battery Pack

**MGTP 60 SSF**  
Ready to Rent  
60kVA Diesel Generator



Battery Pack to connect to generator	Hire Rate			Transport
	Min 1 week	Min 12 weeks	Min 26 weeks – 5 years	
<b>BP-1 (Mini)</b> 0.75kVA/ 1.5kWh – 1ph, 230V	£POA P/W	£POA P/W	£POA P/W	£POA
<b>BP-2 (Small)</b> 3kVA/ 9kWh – 1ph, 230V	£POA P/W	£POA P/W	£POA P/W	£POA
<b>BP-3 (Medium)</b> 7kVA/ 24kWh – 1ph, 230V	£POA P/W	£POA P/W	£POA P/W	£POA
<b>BP-4 (Large)</b> 24kVA/ 60kWh – 3ph, 400V	£POA P/W	£POA P/W	£POA P/W	£POA

Example set-up for illustration purposes only, actual machines supplied may differ in appearance and specification.

# Solar Kit Options //



Multiple solar panels can be connected to our Solar Hybrid Generators or our Battery Packs and positioned & secured on cabin roof or any flat, safe surface available on site.





Solar Kit to connect to battery pack	Hire Rate			Transport
	Min 1 week	Min 12 weeks	Min 26 weeks – 5 years	
<b>275W (per solar panel)</b>	£POA P/W P/P	£POA P/W P/P	£POA P/W P/P	£POA

Example set-up for illustration purposes only, cabins NOT included.

**KEY:** P/W = Per Week, P/P = Per Panel | **Hire period** = Min. 1 week hire  
**Transport** = UK National | **Diesel Fuel** = Supplied on Sale or Return at £POA per litre



Tel 0808 1689099, opt. 2 (24/7 – 365)  
 Email rehire@mhmpant.com www.mhmpant.com

Should machines be booked within the given MHM booking deadline, machine availability and delivery is **100% GUARANTEED**



# Static Generators //

	<p><b>2.75kVA</b> Petrol Generator (Inverter)</p>		<p><b>3.5kVA</b> Petrol Generator</p>		
<p><b>5kVA</b> Petrol Generator</p>		<p><b>8.75kVA</b> Petrol Generator (Inverter)</p>		<p><b>4kVA</b> Diesel Generator</p>	
<p><b>6kVA</b> Eco Diesel Generator</p>		<p><b>6kVA</b> Diesel Generator</p>		<p><b>10kVA</b> Eco Diesel Generator</p>	
<p><b>10kVA</b> Diesel Generator</p>		<p><b>15kVA</b> Diesel Generator</p>		<p><b>20kVA</b> Diesel Generator</p>	
<p><b>20kVA</b> Diesel Generator (Stage 5)</p>		<p><b>30kVA</b> Diesel Generator</p>		<p><b>45kVA</b> Diesel Generator</p>	
<p><b>60kVA</b> Diesel Generator</p>		<p><b>100kVA</b> Diesel Generator</p>		<p><b>160kVA</b> Diesel Generator</p>	
<p><b>200kVA</b> Diesel Generator</p>		<p><b>300kVA</b> Diesel Generator</p>		<p><b>500kVA</b> Diesel Generator</p>	
<p><b>800kVA</b> Diesel Generator</p>		<p><b>1260kVA</b> Diesel Generator</p>		<p><b>Vandal Proof Generators</b> 10-100kVA</p>	

All pictures are for illustration purposes only, actual machines supplied may differ in appearance and specification.



**REHIRE**  
Division

Tel 0808 1689099, opt. 2 (24/7 – 365)  
Email [rehire@mhmpant.com](mailto:rehire@mhmpant.com) [www.mhmpant.com](http://www.mhmpant.com)

Should machines be booked within the given MHM booking deadline, machine availability and delivery is **100% GUARANTEED**



All our generators are HVO Approved (BS EN 15940:2016 Standard Only)



## Generator Size Support //

Should you require help or advice on correctly sizing the generator to suit the application, site cabins or temporary building application, please contact MHM as we'll be happy to guide and support.

**Note:** To enable us to help and advise, we may need you to supply the following information:

- Information on the equipment requiring power;
- The number of cabins or temporary buildings that you're looking to power;
- The plug sizes fitted to the equipment, cabins and/or temporary buildings, ie. 32A or 63A, 230V or 400V, etc;
- A site plan showing the cabins and/or the temporary building set-up.

### Generator Specification //

	Generator Size (kVA)																	
	2.75	3.5	5	8.75	4	6	10	20	30	40	60	100	150	200	300	500	800	1260
<b>Tank Capacity (Litres)</b>	3.6	3.6	6	19.5	13	25	50	120	120	250	250	450	270	600	1000	1300	2000	
<b>Litres per Hour (@ 75% Load)</b>	1	1	1.6	3	1	1.4	2.2	4.6	6.5	9	12	19	28	33	48	70	121	172
<b>CO<sub>2</sub> per Hour (kg)</b>	2.31	2.31	3.7	6.93	2.68	3.75	5.83	12.19	17.23	26.50	33.13	50.35	74.20	84.7	125.7	183.4	317	450.6

<b>Runtime @ 75% Load (Hours)</b>		2.75	3.5	5	8.75	4	6	10	20	30	40	60	100	150	200	300	500	800	1260
<b>Generator Internal Fuel Tank Only</b>		3.5	3.6	3.7	6.5	13	18	20	26	18	31	21	13	16	8	12	14	11	12
Generator Connected to:	<b>950L Stand-Alone Fuel Tank</b>	N/A	N/A	N/A	N/A	N/A	N/A	431	206	146	105	79	50	33	28	20	13	8	5
	<b>2000L Stand-Alone Fuel Tank</b>	N/A	N/A	N/A	N/A	N/A	N/A	909	434	308	222	166	105	71	60	42	28	16	12
	<b>3000L Stand-Alone Fuel Tank</b>	N/A	N/A	N/A	N/A	N/A	N/A	1363	652	461	333	250	158	107	90	62	43	25	17
	<b>6000L Stand-Alone Fuel Tank</b>	N/A	N/A	N/A	N/A	N/A	N/A	N/A	1304	923	666	500	315	214	181	125	86	49	35
	<b>10000L Stand-Alone Fuel Tank</b>	N/A	N/A	N/A	N/A	N/A	N/A	N/A	2173	1538	1111	833	526	357	303	208	143	83	58
	<b>20000L Stand-Alone Fuel Tank</b>	N/A	N/A	N/A	N/A	N/A	N/A	N/A	4347	3076	2222	1666	1052	714	606	416	286	165	116

<b>Socket Configuration</b>		2.75	3.5	5	8.75	4	6	10	20	30	40	60	100	150	200	300	500	800	1260
<b>3ph (400V)</b>	<b>125A</b>	-	-	-	-	-	-	-	-	-	-	-	1	1	1	1	1	-	-
	<b>63A</b>	-	-	-	-	-	-	-	-	1	1	1	1	1	1	1	1	-	-
	<b>32A</b>	-	-	-	-	-	-	-	1	1	1	1	1	1	1	1	1	-	-
	<b>16A</b>	-	-	-	-	-	-	-	-	-	-	-	-	-	-	-	-	-	-
<b>1ph (230V)</b>	<b>32A</b>	-	-	-	1	-	1	2	2	3	4	4	4	4	4	4	4	-	-
	<b>16A</b>	-	2	2	1	1	1	-	2	2	2	2	2	2	2	2	2	-	-
	<b>13A</b>	2	-	-	-	-	-	-	-	-	-	-	-	-	-	-	-	-	-
<b>1ph (110V)</b>	<b>32A</b>	-	1	1	-	1	1	-	3	-	-	-	-	-	-	-	-	-	-
	<b>16A</b>	-	1	1	-	1	2	-	1	-	-	-	-	-	-	-	-	-	-

<b>Hard Wire Facility</b>		2.75	3.5	5	8.75	4	6	10	20	30	40	60	100	150	200	300	500	800	1260
<b>3ph (400V)</b>		-	-	-	-	-	-	-	✓	✓	✓	✓	✓	✓	✓	✓	✓	✓	✓
<b>1ph (230V)</b>		-	-	-	-	-	-	✓	✓	✓	✓	✓	✓	✓	✓	✓	✓	✓	✓
<b>1ph (110V)</b>		-	-	-	-	-	-	-	✓	-	-	-	-	-	-	-	-	-	-

# Static Generators, cont. //



Model	Hire Rate						Transport	
	Min 1 week		Min 12 weeks		Min 26 weeks – 5 years			
	Standard (50 Hours)	Unlimited Hours	Standard (50 Hours)	Unlimited Hours	Standard (50 Hours)	Unlimited Hours		
2.75 kVA Petrol (Inverter)	£POA	£POA	£POA	£POA	£POA	£POA	£POA	
3.5 kVA Petrol	£POA	£POA	£POA	£POA	£POA	£POA	£POA	
5 kVA Petrol	£POA	£POA	£POA	£POA	£POA	£POA	£POA	
8.75 kVA Petrol (Inverter)	£POA	£POA	£POA	£POA	£POA	£POA	£POA	
4 kVA Diesel	£POA	£POA	£POA	£POA	£POA	£POA	£POA	
6 kVA ECO Diesel	£POA	£POA	£POA	£POA	£POA	£POA	£POA	
6 kVA Diesel	£POA	£POA	£POA	£POA	£POA	£POA	£POA	
10 kVA ECO Diesel	£POA	£POA	£POA	£POA	£POA	£POA	£POA	
10 kVA Diesel	£POA	£POA	£POA	£POA	£POA	£POA	£POA	
15 kVA Diesel	£POA	£POA	£POA	£POA	£POA	£POA	£POA	
20 kVA Diesel	£POA	£POA	£POA	£POA	£POA	£POA	£POA	
20 kVA Diesel (Stage 5)	£POA	£POA	£POA	£POA	£POA	£POA	£POA	
30 kVA Diesel	£POA	£POA	£POA	£POA	£POA	£POA	£POA	
45 kVA Diesel	£POA	£POA	£POA	£POA	£POA	£POA	£POA	
60 kVA Diesel	£POA	£POA	£POA	£POA	£POA	£POA	£POA	
100 kVA Diesel	£POA	£POA	£POA	£POA	£POA	£POA	£POA	
160 kVA Diesel	£POA	£POA	£POA	£POA	£POA	£POA	£POA	
200 kVA Diesel	£POA	£POA	£POA	£POA	£POA	£POA	£POA	
300 kVA Diesel	£POA	£POA	£POA	£POA	£POA	£POA	£POA	
500 kVA Diesel	£POA	£POA	£POA	£POA	£POA	£POA	£POA	
800 kVA Diesel	£POA	£POA	£POA	£POA	£POA	£POA	£POA	
1260 kVA Diesel	£POA	£POA	£POA	£POA	£POA	£POA	£POA	
Vandal Proof Container to House 6–100kVA Generator Only	£POA	£POA	£POA	£POA	£POA	£POA	£POA	
OPTIONAL EXTRAS	Theft Tracker	£POA per machine	£POA per machine	£POA per machine	£POA per machine	£POA per machine	£POA per machine	–
	Chalwyn Valve	£POA	£POA	£POA	£POA	£POA	£POA	–
	Spark Arrestor	£POA	£POA	£POA	£POA	£POA	£POA	–

## BREAKDOWN COVER

Standard Hire Rate = Breakdown cover only within the hours of 8am–5pm (Mon–Fri), excluding Bank Holidays

Unlimited Hire Rate = 24/7 breakdown cover

KEY: P/W = Per Week | Hire period = Min. 1 week hire

Transport = UK National | Diesel Fuel = Supplied on Sale or Return at £POA per litre



Tel 0808 1689099, opt. 2 (24/7 – 365)  
Email rehire@mhmpant.com www.mhmpant.com

Should machines be booked within the given MHM booking deadline, machine availability and delivery is **100% GUARANTEED**



All our generators are HVO Approved (BS EN 15940:2016 Standard Only)





# Towable Generators //



Model	Hire Rate						Transport
	Min 1 week		Min 12 weeks		Min 26 weeks – 5 years		
	Standard (50 Hours)	Unlimited Hours	Standard (50 Hours)	Unlimited Hours	Standard (50 Hours)	Unlimited Hours	
<b>10 kVA Diesel</b>	£POA	£POA	£POA	£POA	£POA	£POA	£POA
<b>15 kVA Diesel</b>	£POA	£POA	£POA	£POA	£POA	£POA	£POA
<b>20 kVA Diesel</b>	£POA	£POA	£POA	£POA	£POA	£POA	£POA
<b>20 kVA Diesel (Stage 5)</b>	£POA	£POA	£POA	£POA	£POA	£POA	£POA
<b>30 kVA Diesel</b>	£POA	£POA	£POA	£POA	£POA	£POA	£POA
<b>45 kVA Diesel</b>	£POA	£POA	£POA	£POA	£POA	£POA	£POA
<b>60 kVA Diesel</b>	£POA	£POA	£POA	£POA	£POA	£POA	£POA
<b>100 kVA Diesel</b>	£POA	£POA	£POA	£POA	£POA	£POA	£POA
<b>OPTIONAL EXTRAS</b>	Theft Tracker	£POA per machine	£POA per machine	£POA per machine	£POA per machine	£POA per machine	–
	Chalwyn Valve	£POA	£POA	£POA	£POA	£POA	–
	Spark Arrestor	£POA	£POA	£POA	£POA	£POA	–

All pictures are for illustration purposes only, actual machines supplied may differ in appearance and specification.

**KEY:** P/W = Per Week | **Hire period** = Min. 1 week hire  
**Transport** = UK National | **Diesel Fuel** = Supplied on Sale or Return at £POA per litre

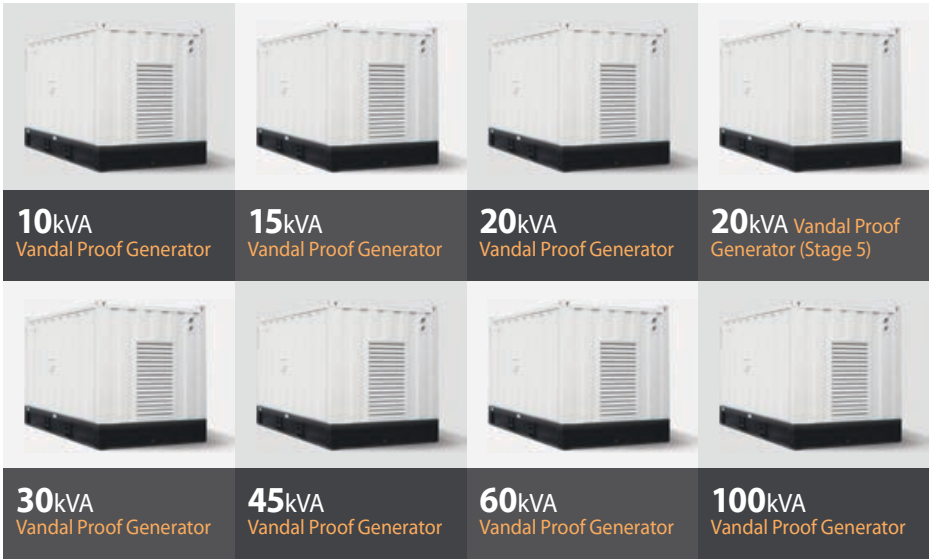
### BREAKDOWN COVER

**Standard Hire Rate** = Breakdown cover only within the hours of 8am–5pm (Mon–Fri), excluding Bank Holidays

**Unlimited Hire Rate** = 24/7 breakdown cover



# Vandal Proof Generators //



**10kVA**  
Vandal Proof Generator

**15kVA**  
Vandal Proof Generator

**20kVA**  
Vandal Proof Generator

**20kVA Vandal Proof Generator (Stage 5)**

**30kVA**  
Vandal Proof Generator

**45kVA**  
Vandal Proof Generator

**60kVA**  
Vandal Proof Generator

**100kVA**  
Vandal Proof Generator

Model	Hire Rate						Transport
	Min 1 week		Min 12 weeks		Min 26 weeks – 5 years		
	Standard (50 Hours)	Unlimited Hours	Standard (50 Hours)	Unlimited Hours	Standard (50 Hours)	Unlimited Hours	
<b>10 kVA Diesel</b>	£POA	£POA	£POA	£POA	£POA	£POA	£POA
<b>15 kVA Diesel</b>	£POA	£POA	£POA	£POA	£POA	£POA	£POA
<b>20 kVA Diesel</b>	£POA	£POA	£POA	£POA	£POA	£POA	£POA
<b>20 kVA Diesel (Stage 5)</b>	£POA	£POA	£POA	£POA	£POA	£POA	£POA
<b>30 kVA Diesel</b>	£POA	£POA	£POA	£POA	£POA	£POA	£POA
<b>45 kVA Diesel</b>	£POA	£POA	£POA	£POA	£POA	£POA	£POA
<b>60 kVA Diesel</b>	£POA	£POA	£POA	£POA	£POA	£POA	£POA
<b>100 kVA Diesel</b>	£POA	£POA	£POA	£POA	£POA	£POA	£POA
<b>OPTIONAL EXTRAS</b>	Theft Tracker	£POA per machine	£POA per machine	£POA per machine	£POA per machine	£POA per machine	–
	Chalwyn Valve	£POA	£POA	£POA	£POA	£POA	–
	Spark Arrestor	£POA	£POA	£POA	£POA	£POA	–

All pictures are for illustration purposes only, actual machines supplied may differ in appearance and specification.

All Vandal Proof Generators are **c/w internal 2000L fuel tank.**

**KEY:** P/W = Per Week | **Hire period** = Min. 1 week hire  
**Transport** = UK National | **Diesel Fuel** = Supplied on Sale or Return at £POA per litre

## BREAKDOWN COVER

**Standard Hire Rate** = Breakdown cover only within the hours of 8am–5pm (Mon–Fri), excluding Bank Holidays

**Unlimited Hire Rate** = 24/7 breakdown cover



Tel 0808 1689099, opt. 2 (24/7 – 365)  
 Email rehire@mhmlant.com www.mhmlant.com

Should machines be booked within the given MHM booking deadline, machine availability and delivery is **100% GUARANTEED**



All our generators are HVO Approved (BS EN 15940:2016 Standard Only)

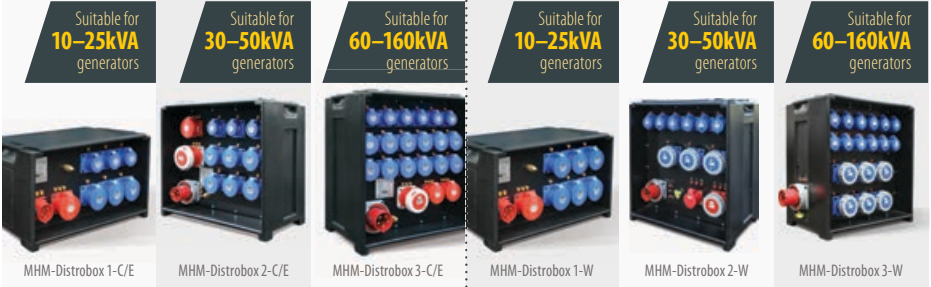


# Distribution Boxes //

Various other Distro Box and Fly Lead options available, please contact for details,



**C/E** (Suitable for most construction or event site applications)      **W** (Suitable for most welfare cabin set up applications)



Distribution Box	Socket Configuration	3ph (400V)			1ph (230V)			Hire Rate		Transport
		125A	63A	32A	63A	32A	16A	Min 1 week	Min 26 weeks – 5 years	
<b>Distrobox 1-C/E</b> 32A 3ph (400V) Site Electrical Distribution Box	Input Plug	-	-	1	-	-	-	£POA	£POA	£POA
	Output Sockets	-	-	1	-	3	3	£POA	£POA	
<b>Distrobox 2-C/E</b> 63A 3ph (400V) Site Electrical Distribution Box	Input Plug	-	1	-	-	-	-	£POA	£POA	£POA
	Output Sockets	-	1	1	-	6	3	£POA	£POA	
<b>Distrobox 3-C/E</b> 125A 3ph (400V) Site Electrical Distribution Box	Input Plug	1	-	-	-	-	-	£POA	£POA	£POA
	Output Sockets	-	1	2	-	12	6	£POA	£POA	
<b>Distrobox 1-W</b> 32A 3ph (400V) Welfare Cabin Electrical Distribution Box	Input Plug	-	-	1	-	-	-	£POA	£POA	£POA
	Output Sockets	-	-	1	-	6	-	£POA	£POA	
<b>Distrobox 2-W</b> 63A 3ph (400V) Welfare Cabin Electrical Distribution Box	Input Plug	-	1	-	-	-	-	£POA	£POA	£POA
	Output Sockets	-	1	1	3	6	-	£POA	£POA	
<b>Distrobox 3-W</b> 125A 3ph (400V) Welfare Cabin Electrical Distribution Box	Input Plug	1	-	-	-	-	-	£POA	£POA	£POA
	Output Sockets	-	1	2	6	12	-	£POA	£POA	
<b>Various other Distro Box options available, contact for details.</b>								£POA	£POA	£POA

# Cables //



Cable	Hire Rate		Transport
	Min 1 week	Min 26 weeks – 5 years	
<b>5m Ext Cable</b> (400V, 32A)	£POA	£POA	£POA
<b>5m Ext Cable</b> (400V, 63A)	£POA	£POA	
<b>5m Ext Cable</b> (400V, 125A)	£POA	£POA	
<b>25m Ext Cable</b> (230V, 16A/32A)	£POA	£POA	
<b>25m Ext Cable</b> (230V, 63A)	£POA	£POA	
<b>Various other cables available, contact for details.</b>	£POA	£POA	£POA

**KEY:** P/W = Per Week | **Hire period** = Min. 1 week hire  
**Transport** = UK National

... All pictures are for illustration purposes only, actual machines supplied may differ in appearance and specification.



# Fuel Storage //

## Stand-Alone Generator Fuel Tank //



**NOTES**

1: All Fuel Tanks are supplied empty of fuel. If tank is required with fuel, fuel is charged upfront upon 1st invoice and a credit will be issued if returned.

2: Generator and Stand-Alone Fuel Tank are connected together to allow for an extended runtime between refuelling.

Generator Tank Bundled Fuel Tank to connect to generator	Hire Rate	Transport
950 Litre	£POA P/W	£POA
2000 Litre	£POA P/W	
3000 Litre	£POA P/W	
6000 Litre	£POA P/W	
10000 Litre	£POA P/W	
20000 Litre	£POA P/W	

## Site Fuel Bowser //



**NOTES**

1: All Fuel Bowsers are supplied empty of fuel. If bowser is required with fuel, fuel is charged upfront upon 1st invoice and a credit will be issued if returned.

2: If unsure of pump kit requirements, please contact MHM for assistance.

Manual, Electric 12/24V, 110V/230V & petrol engine driven pump kit available

Site Fuel Bowser Bundled Fuel Tank C/W manual or electric pump kit to use as site bowser	Hire Rate	Transport
950 Litre	£POA P/W	£POA
2000 Litre	£POA P/W	
3000 Litre	£POA P/W	
6000 Litre	£POA P/W	
<b>Optional Extra:</b> Petrol Engine Driven Pump Kit	+£POA P/W	

## Fuel Caddi //



**NOTE**

Fuel Caddi is supplied empty, no fuel.

Supplied c/w hand pump kit

Fuel Caddi Bundled Site Fuel Bowser	Hire Rate	Transport
105 Litre	£POA P/W	£POA

**KEY:** P/W = Per Week | **Hire period** = Min. 1 week hire  
**Transport** = UK National | **Diesel Fuel** = Supplied on Sale or Return at £POA per litre

# AdBlue Storage //



## 950 Litre

Transportable AdBlue storage tank suitable for AdBlue



## 2000 Litre

Transportable AdBlue storage tank suitable for AdBlue

Model	Hire Rate						Transport
	Min 1 week		Min 12 weeks		Min 26 weeks – 5 years		
	Standard	Premium	Standard	Premium	Standard	Premium	
950 Litre – Static	£POA	£POA	£POA	£POA	£POA	£POA	£POA
950 Litre – Towable	£POA	£POA	£POA	£POA	£POA	£POA	£POA
2000 Litre – Static	£POA	£POA	£POA	£POA	£POA	£POA	£POA
2000 Litre – Towable	£POA	£POA	£POA	£POA	£POA	£POA	£POA

**KEY:** P/W = Per Week | **Hire period** = Min. 1 week hire  
**Transport** = UK National | **Diesel Fuel** = Supplied on Sale or Return at £POA per litre

### BREAKDOWN COVER

**Standard Hire Rate** = Breakdown cover only within the hours of 8am–5pm (Mon–Fri), excluding Bank Holidays

**Premium Hire Rate** = 24/7 breakdown cover

Should machines be booked within the given MHM booking deadline, machine availability and delivery is

**100% GUARANTEED**



**NOTE** AdBlue storage tank is supplied empty, no AdBlue.

All pictures are for illustration purposes only, actual machines supplied may differ in appearance and specification.



Tel 0808 1689099, opt. 2 (24/7 – 365)  
 Email rehire@mhmpant.com www.mhmpant.com

# Water Storage //

## MHM WATER STORAGE



**1125 Litre/ 250 Gallon**  
Towable water bowser c/w on demand pump kit



**2000 Litre/ 440 Gallon**  
Towable water bowser c/w on demand pump kit



**1000 Litre/ 220 Gallon**  
Static water bowser c/w on demand pump kit



**2000 Litre/ 440 Gallon**  
Static water bowser c/w on demand pump kit



**1125 Litre/ 250 Gallon**  
Road-towable pressure washer bowser suitable for general washing and cleaning



**2000 Litre/ 440 Gallon**  
Road-towable pressure washer bowser suitable for general washing and cleaning

Model	Hire Rate						Transport
	Min 1 week		Min 12 weeks		Min 26 weeks – 5 years		
	Standard	Premium	Standard	Premium	Standard	Premium	
<b>1125 Litre</b> Towable Water Bowser	£POA	£POA	£POA	£POA	£POA	£POA	£POA
<b>2000 Litre</b> Towable Water Bowser	£POA	£POA	£POA	£POA	£POA	£POA	£POA
<b>1000 Litre</b> Static Water Bowser	£POA	£POA	£POA	£POA	£POA	£POA	£POA
<b>2000 Litre</b> Static Water Bowser	£POA	£POA	£POA	£POA	£POA	£POA	£POA
<b>1125 Litre</b> Road-Towable Pressure Washer Bowser	£POA	£POA	£POA	£POA	£POA	£POA	£POA
<b>2000 Litre</b> Road-Towable Pressure Washer Bowser	£POA	£POA	£POA	£POA	£POA	£POA	£POA

**KEY:** P/W = Per Week | **Hire period** = Min. 1 week hire  
**Transport** = UK National | **Diesel Fuel** = Supplied on Sale or Return at £POA per litre

**BREAKDOWN COVER**  
**Standard Hire Rate** = Breakdown cover only within the hours of 8am–5pm (Mon–Fri), excluding Bank Holidays  
**Premium Hire Rate** = 24/7 breakdown cover

Should machines be booked within the given MHM booking deadline, machine availability and delivery is **100% GUARANTEED**



**NOTE** Water Bowser is supplied empty, no water.

All pictures are for illustration purposes only, actual machines supplied may differ in appearance and specification.

# Site Lighting //



## Street- Lite (LED-2)

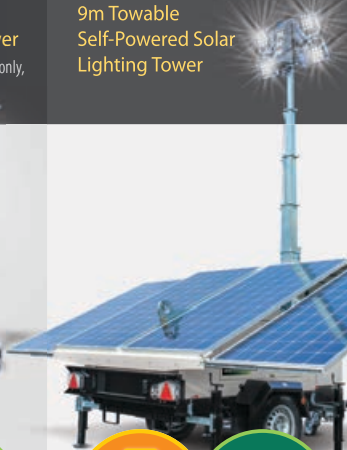
5.5m Stand-alone, Self-Powered Solar Lighting Tower  
Suitable for low level lighting applications only, such as car parks, walkways, steps or stairs.



- LED Lights
- DIESEL FREE
- Dusk 'til Dawn Auto Start/ Stop Sensor
- SELF CHARGING SOLAR POWERED

## ST-9 (LED-4)

9m Towable Self-Powered Solar Lighting Tower



- LED Lights
- DIESEL FREE
- Dusk 'til Dawn Auto Start/ Stop Sensor
- SELF CHARGING SOLAR POWERED

## DT-9 (LED-8)

9m Towable Eco Diesel Lighting Tower



- LED Lights
- ECO FRIENDLY
- Dusk 'til Dawn Auto Start/ Stop Sensor
- 30 DAY RUN TIME  
T&Cs apply

Model	Hire Rate												Transport	
	Min 1 week				Min 12 weeks				Min 26 weeks – 5 years					
	Winter		Summer		Winter		Summer		Winter		Summer			
	Standard	Premium	Standard	Premium	Standard	Premium	Standard	Premium	Standard	Premium	Standard	Premium		
Street-Lite (LED-2)	£POA P/W	£POA P/W	£POA P/W	£POA P/W	£POA P/W	£POA P/W	£POA P/W	£POA P/W	£POA P/W	£POA P/W	£POA P/W	£POA P/W	£POA P/W	£POA
ST-9 (LED-4)	£POA P/W	£POA P/W	£POA P/W	£POA P/W	£POA P/W	£POA P/W	£POA P/W	£POA P/W	£POA P/W	£POA P/W	£POA P/W	£POA P/W	£POA P/W	£POA
DT-9 (LED-8)	£POA P/W	£POA P/W	£POA P/W	£POA P/W	£POA P/W	£POA P/W	£POA P/W	£POA P/W	£POA P/W	£POA P/W	£POA P/W	£POA P/W	£POA P/W	£POA

### Automatic Seasonal Rates Apply:

Winter Rates = October 1st – March 31st | Summer Rates = April 1st – September 30th

KEY: P/W = Per Week | Hire period = Min. 1 week hire

Transport = UK National | Diesel Fuel = Supplied on Sale or Return at £POA per litre

### BREAKDOWN COVER

Standard Hire Rate = Breakdown cover only within the hours of 8am–5pm (Mon–Fri), excluding Bank Holidays

Premium Hire Rate = 24/7 breakdown cover



Tel 0808 1689099, opt. 2 (24/7 – 365)  
Email rehire@mhmpant.com www.mhmpant.com

Should machines be booked within the given MHM booking deadline, machine availability and delivery is **100% GUARANTEED**



All our lighting towers are HVO Approved (BS EN 15940:2016 Standard Only)



All pictures are for illustration purposes only, actual machines supplied may differ in appearance and specification.

# Site Services //



Should you require any help, support and advice with your site set-up, please contact MHM as we will be happy to assist with all your temporary site electrical & plumbing requirements.



## Electrical services

- ✓ Generator Connect
- ✓ Generator Test
- ✓ Testing & Certification
- ✓ PAT Testing

Our install team work to the highest quality and install to the current 18th edition British Standard BS 7671.

## Plumbing services

- ✓ Site water supplies to cabins, washrooms and catering
- ✓ Water meter installation
- ✓ Drainage systems
- ✓ Standpipe, WC and sink waste pipe installation
- ✓ Rainwater harvesting
- ✓ Water heaters and boilers

## Note //

To enable us to help and advise, we may need you to supply the following information:

- Information on the equipment requiring set-up support;
- The number of cabins or temporary buildings that you're looking to connect;
- The type and style of cabins or temporary buildings, ie. office, canteen, toilet, showers, drying room or store;
- A site plan showing the cabins and/or the temporary building set-up.



**REHIRE**  
Division

Tel 0808 1689099, opt. 2 (24/7 – 365)  
Email [rehire@mhmplant.com](mailto:rehire@mhmplant.com) [www.mhmplant.com](http://www.mhmplant.com)



# MHM Service Charges //

**Standard Working Hours:** 8am to 5pm Mon to Fri,  
Excluding Bank Holidays.

- **Hourly Rate "Travel time and labour on site"** = £POA per hour
- **Mileage Charge** = £POA per mile

**Out of Working Hours:** Before 8am and After 5pm  
Mon to Fri, Weekends & Bank Holidays

- **Call out Charge** = £POA per call out
- **Hourly Rate "Travel time and labour on site"** = £POA per hour
- **Mileage Charge** = £POA.65 per mile

## NOTES:

- Our service charges apply to any breakdown or call out which proves that the failure or fault is due to improper customer care or operator error.
- Our service charges apply to equipment on rent from MHM only.
- An engineer request form MUST be completed in full and returned to MHM to officially book a call out.
- A breakdown MUST be officially reported prior to 10am for an engineer to attend site that day "best endeavours", should a breakdown be reported after 10am an engineer will attend the following day.
- All hire rates and prices are valid at the time of print and are subject to change at any time without prior notice or warning.

# Hiring Equipment //

To hire any piece of equipment from this catalogue, contact our Hire Desk on **0808 168 9099 (Opt. 2)**.

*And don't forget...*

This catalogue serves to meet the most common of our customers rental requirements, so if there is something you may need not found, please don't hesitate to ask.



**REHIRE**  
Division

Tel 0808 1689099, opt. 2 (24/7 – 365)

Email [rehire@mhmplant.com](mailto:rehire@mhmplant.com) [www.mhmplant.com](http://www.mhmplant.com)

Serving all your power, fluid storage, lighting  
and site services requirements

– contact now as we are happy to help.



# Notes //

---

Handwriting practice area consisting of 25 horizontal dotted lines.



**REHIRE**  
Division

Tel 0808 1689099, opt. 2 **(24/7 - 365)**

Email [rehire@mhplant.com](mailto:rehire@mhplant.com) [www.mhplant.com](http://www.mhplant.com)

Serving all your power, fluid storage, lighting  
and site services requirements

- **contact now as we are happy to help.**

For more information call  
our **MHM HIRE DESK** on:  
**+44 (0)808 168 9099**  
**(Option 2)**

Or email:  
[rehire@mhmplant.com](mailto:rehire@mhmplant.com)

**MHM West (Headquarters)**

Unit 3, Aberafan Road,  
Baglan Industrial Park,  
Port Talbot, SA12 7DJ

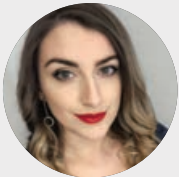
**MHM South East** COMING SOON

**MHM North West** COMING SOON

**MHM Midlands** COMING SOON

**MHM Scotland**

13 Palacecraig St, Coatbridge, ML5 4SB



**Bethan Jones**  
Hire Desk & Contract  
Hire Manager

**Mob:** +44 7572 231754  
+44 (0)808 1689099 (Opt. 2)  
[rehire@mhmplant.com](mailto:rehire@mhmplant.com)



**Chloe Allen**  
After Sales &  
Hire Desk Support

**Tel:**  
+44 (0)808 1689099 (Opt. 5)  
[parts@mhmplant.com](mailto:parts@mhmplant.com)



**Brad Ireland**  
Group  
Sales Director

**Mob:**  
+44 7807 275086  
**(24/7, 365)**  
[brad@mhmplant.com](mailto:brad@mhmplant.com)



**Rob Pullen**  
Operations  
Director

**Mob:**  
+44 7807 275 089  
**(24/7, 365)**  
[rob@mhmplant.com](mailto:rob@mhmplant.com)

**Terms & Conditions:**

- All Prices = Plus VAT | Hire Period = Minimum one week hire
- Equipment Availability = Advised at the time of request and confirmed on our hire quotation
- Order Booking Deadline = Advised at the time of request and stated in our hire quotation
- Prices = Valid for 2021 Only

All pictures are for illustration purposes only, actual machines supplied may differ in appearance and specification. (4 August 2021)

